

ART HOUSE TOUR 2018



In association with

Barfoot & Thompson
COMMERCIAL REAL ESTATE



Max Gimblett '50

WELCOME

Thank you for supporting the 2018 Auckland Grammar School Foundation Trust Art House Tour.

Grammar is proud to provide a rigorous and well-rounded education for young men and the Arts are a key part of the School's curriculum.

During this event, you will see works by current students, Grammar Old Boys and artists from around New Zealand, all of whom are happy to share their passion and talent with us.

Our thanks are extended to this year's committee, ably led by Sarah McLeay, and the many sponsors, volunteers and supporters who have given their time and expertise in support of the School.

The Auckland Grammar School Foundation Trust is most grateful for your support, as the funds raised will be allocated to the Academic Endowment Fund, to recruit, retain and reward the very best teachers.

Enjoy the beautiful homes and gardens on this year's Tour and the extensive range of artwork that has been curated within – hopefully you will come away with a piece of art at the end of the day.

Tim O'Connor
Headmaster

Sponsors



SCHEDULE

Art House Tour Launch Evening

Friday 26 October, 6.30pm–9pm

Main Hall, Auckland Grammar School

Faulkner and Canon Awards for most promising student artists

Live auction begins at 7.45pm

See page 36 for more details on live and silent auction items.

Art House Tour

Saturday 27 October, 10am–4pm

- | | |
|----------|---|
| 10am | Art House Tour begins |
| 3.45pm | Final time to enter any home on the Tour |
| 4pm-5pm | Collection of purchased artworks from Art House Tour homes |
| 10am-4pm | Art Shop and Café open to the public at St Barnabas Church, 283 Mount Eden Road |

Registration for the Tour

Registration for the Art House Tour and collection of wristband and catalogue will take place at the house that you choose to begin the Tour on. Please bring your booking confirmation with you and note that photo ID is required for the registration process.

Please see Tour guidelines outlined on page 37.

arthousetour.co.nz



HOUSE 1

Parnell

Designed by architects Patterson Associates in a 1960s Italian modernist style, this home's contemporary art-filled interior includes a timeless mix of semi-industrial and mid-century classics against a warm, natural material palette.

The rear of the house forms a pavilion in the garden, providing all-day sun and a raised potager off the kitchen provides year-round produce. Keen supporters of the arts, some of the owners' contemporary art will be displayed alongside new works for sale.

Gallery partner

GOW LANGSFORD GALLERY



Max Gimblett '50 ▲

One of New Zealand's most recognised painters, Max's philosophies and practices encompass influences as varied as Abstract Expressionism, Modernism, Eastern and Western spiritual beliefs, Jungian psychology and ancient cultures. A Grammar Old Boy, Max has been based in New York since the early 1970s and is represented in major collections around the world, including the permanent collection of the Solomon R. Guggenheim and the Museum of American Art (New York), the Whitney Museum of Modern Art, the National Gallery of Art, Washington DC, the National Gallery of Art of Australia, the Queensland Art Gallery and the Gallery of New South Wales.



Chris Heaphy ▶

A Grammar parent, New Zealand-born Chris has exhibited throughout New Zealand and internationally in Paris, Hong Kong and Sydney, with a career that spans over 25 years. His broad appeal derives in part from the invention and development of a visually arresting personal symbology of signs.



Sara Hughes ▶

Sara completed a BFA and MFA in painting from Elam School of Fine Arts and has exhibited in major public galleries in New Zealand. A Wallace Art Award winner, her paintings and installations are held in public and private collections, including the Auckland City Art Gallery, Te Papa and the National Gallery of Australia.



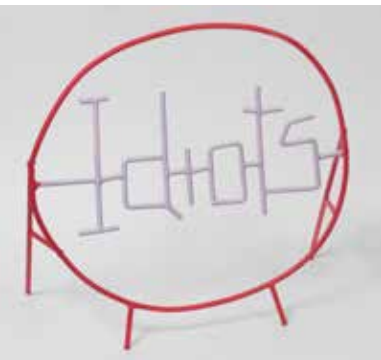
Karl Maughan ◀

Karl holds a Master of Fine Arts from Elam School of Fine Arts, University of Auckland (1987). He had exhibited in Australasia and Britain for more than 25 years, with his paintings appearing in the Saatchi Gallery, London (1998), City Gallery, Wellington (1995) and Vertigo Gallery, London (2003). Karl's works are widely collected by private patrons and his largest painting to date, 'A clear day' (1999) is in the permanent collection of Te Papa Tongarewa.



Gregor Kregar

Gregor has an established career that spans more than two decades and he exhibits regularly in Australasia and Europe. Highlights include a solo show at Tin Shed Gallery as a collateral event to Sydney Biennale in 2008 and inclusion in the Cairo Biennale and the 29th Ljubljana Biennale in 2011. Gregor's oeuvre encompasses an extensive and unique array of media that ranges from stainless steel, glazed porcelain, lambda print photography, and found objects such as recycled timber and neon lighting.



Iain Cheeseman

Iain is primarily a creator of objects that link sculpture with painting, language and drawing. While there is often an underlying sense of humour within his work, his medium of communication delivers more than an initial reaction – where there is often a slow defuse of more serious concerns.

Judy Millar

An internationally recognised artist, Judy lives between Auckland and Berlin and has a significant reputation in Europe. She has exhibited at the Venice Biennale and Rohkunstbau, Berlin and Schloss Marquardt, Potsdam. Judy works with processes of erasure, wiping or scraping paint off the surface of the work, taking up known positions only to deconstruct and question their previous meanings.



IN SUPPORT OF THE ACADEMIC ENDOWMENT FUND

Funds raised from this year's Art House Tour will be used to support the Academic Endowment Fund of the Auckland Grammar School Foundation Trust.

This fund assists the School to attract and retain the very best teachers in the classroom.

Annual awards are given to teachers who demonstrate that they can provide enriching and engaging learning experiences in support of the School's programme for academic excellence.

Teachers are also recognised with awards where they are providing their own time to assist with a wide variety of extracurricular activities.



The Academic Endowment Fund has been built over 16 years through the generous support of Old Boys, parents of students and members of the wider Grammar community. We are currently providing extracurricular awards to most teachers and up to 30 additional awards each year. We hope to see this grow.

Thank you for your support.

Jack Porus
Chairman, Auckland Grammar School
Foundation Trust



HOUSE 2

Parnell

This 1906–1909 kauri villa was renovated in 2017 by Chris Fox Architects, transforming the original house into a beautiful family home. The existing two storeys were completely gutted and a third storey was added within the original ceiling height. The kauri floors at ground level were kept and beams from the roof were used as additional floor boards.

Contemporary elements blend with those of the old villa, including the use of concrete, exposed steel beams, ply ceilings, steel balustrades and a stunning powder-coated steel kitchen by IMO.

Outside, a faux grass pitch was installed for cricket and other ball sports, while the metal gate and entrance features were created by Powersurge.



Brad Novak '89

Arguably New Zealand's pre-eminent urban-pop-artist, Brad (aka New Blood Pop) wants us to "keep our inner child alive". A Grammar Old Boy, Brad is the first New Zealand artist to have exhibited with global superstars such as Warhol, Haring, Lichtenstein, Shepard Fairey and Banksy (Toronto, 2015). He shows internationally with galleries in the UK, US and Canada.



John Mulholland

John works across a diverse range of media, using sculpture, found objects, painting, print and photography to articulate space, shape and language in a conceptual framework. Creating artwork for private commissions, public exhibitions, as well as in support of communities, organisations, businesses and schools, his work is found in corporate and private collections throughout New Zealand.



Michel Tuffery

Michel's art practice is multi-disciplinary, conceptually working across all media. A master printmaker, painter, sculptor and carver, his kaupapa is to take the role of 'in-between', with an intent to open up conversations across environment, community and cultural and historical divides.



Guy Harkness

Guy is a New Zealand artist living and working in Mount Eden. Working mostly in oil or acrylic on canvas or board, his paintings include local landscapes, portraits and still lifes.

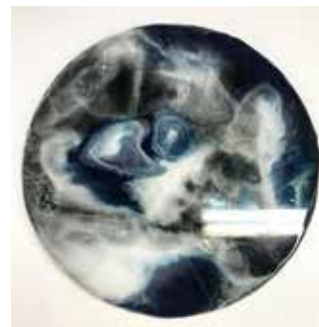


◀ Anna Leyland

A contemporary artist using pattern making and symbolism, Anna's works celebrate diversity and multiculturalism within Aotearoa – a hallmark of New Zealand's social ethos. She has exhibited in over 30 exhibitions since 2001 and most recently has completed commissions for Nespresso, The Auckland City Council, Orcon, The Big Hoot and Sofitel Queenstown.

Jake Feast ▶

A self-taught 22-year-old artist, Jake works with trial and error as his motto. He compares his practise to a "science experiment", discovering and learning with each piece, taking inspiration from various landscapes and putting a hypothetical magnifying glass on the finer details of the world.



Ainsley O'Connell ▶

Ainsley combines her 20-year art practice with lecturing in architecture; two creative fields, each informing the other. Casting translucent glass enables interactions between light, space, flow and form; the language of architecture. Her recent Master of Fine Arts at Elam has facilitated works that appear to freeze the casting process in time.



Raukura Turei ▶

A multi-disciplinary artist, practising architect and performer of Ngai Tai ki Tamaki and Nga Rauru ka Tahi iwi, Raukura graduated from the University of Auckland with a Masters of Architecture (Prof) in 2011 and registered with the NZRAB in 2015. Recent projects and exhibitions include The Auckland Art Fair, Objectspace, He Whare Tangata (colab with Elisapeta Heta and Lynda Simmons) and Between Silos A+W Exhibition.



▲ Neil Donaldson

Neil was brought up on a farm in the Bay of Islands, making things out of steel in the workshop in his spare time. He invented and patented the first hydraulic tractor-mounted post drivers in New Zealand, which are now manufactured for local and export markets. Neil likes the challenge of making art that stands out.

Canon

freedom to focus

Let the doctors heal, the innovators innovate, the leaders lead, the teachers teach. We've built our business around technology that reduces friction, meaning more time on what is important.

Canon believe that with freedom to focus on what you do best, you spend your energy on the things that set you apart.

Canon can help take care of print, collaboration technology like video conferencing and digital signage, and software to automate invoice processes.



Proudly supporting Auckland Grammar School

HOUSE 3

Mount Eden

This large 1875 Victorian villa has been beautifully restored and enlarged over more than two decades by its current owners. Set on more than half an acre of terraced garden backing onto Mount Eden, the house commands spectacular views of the city and Harbour Bridge and across to the Waitakere Ranges.

Built as the country home of a Queen Street merchant and Member of Parliament, the home has five bedrooms, three living rooms, a large dining room and four bathrooms. The owners collect contemporary New Zealand art and sculpture and have a significant collection of New Zealand colonial furniture.

Gallery partner

nkb
GALLERY



Neal Palmer

Since arriving in New Zealand in the 1990s, English-born painter Neal has become known for his large-scale representations of native plants. His paintings offer a paradox, being oversized images, yet at the same time somehow intimate, and push towards abstraction while being representational.

Graeme Hitchcock

Graeme's figurative cast glass and bronze works have subtle connections and a strong sense of narrative. They playfully explore the human form, making quiet observations of our mannerisms and behaviour. Graeme was a finalist in the 2018 Wallace Art Awards.



Adrian Jackman

Adrian graduated with an MFA from the University of Auckland's Elam School of Fine Arts in 1997 and has exhibited widely since, gaining a number of awards and residencies. His work is held in public, private and corporate collections across New Zealand and overseas: including the Wallace Arts Trust, The Sarjeant Gallery, Citibank Art Collection and Perpetual Guardian Trust.

Peter Miller

A regular finalist in some of New Zealand's most prestigious art awards, Peter is a painter of still life; making objects metaphorical, symbolic and memorable. His work features in collections across Europe, USA and Australasia, including a number of works in the James Wallace Arts Trust.



Belinda Griffiths

A painter and printmaker, Belinda's works explore the expressive potential of the gestural mark. She won the Molly Morpeth Canaday Art Award and The Estuary Art Awards and has been a finalist in the Wallace Art Awards, the NZ Painting and Printmaking Award, and the Adam Portraiture Award.



HOUSE 4

Mount Eden

Built around 1904, this two-storeyed villa was the vicarage for the church across the road for many years – many marriages and baptisms are likely to have been initiated here.

The current owners bought the property just over 10 years ago from the vicarage in its original condition. It has been remodelled and modernised over the last decade, including an extensive renovation by Jones Architects five years ago, but the owners have taken care to preserve its historic features.

The owners describe their style as relaxed, with a blend of old and new, including “a menagerie of birds, rabbits, dogs, cats and a few kids thrown in”.

This house is home to an extensive art collection of works from some of New Zealand’s most well known artists as well as a significant number of emerging artists.



Hannah Jensen

A multidisciplinary artist most well-known for her carved work, Hannah graduated from Auckland University of Technology (AUT) in 2004 with a Bachelor of Visual Arts, majoring in printmaking. She has since transferred her skills to the painted medium, developing a unique stylistic approach.

Hannah will be ‘in residence’ during the Tour, creating an artwork through her process of art carving.



Private art collection

This home has been included on the Tour to display the owners’ significant collection of contemporary New Zealand art. Guests are invited to enjoy the artworks, both inside and outside.



◀ Felicity Jones and Mark Smith

Botanical enthusiast Felicity and photographer Mark have begun a collaboration exploring the history of the Wardian Case and its wider social, cultural and environmental implications. The series addresses both the personal stories of European settlers seeking the reassurance of an English cottage garden in the New Zealand bush, alongside the broader scientific and economic ambitions of colonising powers.

Cathy Carter ▶

With a MVA Hons from AUT, Cathy is a four-time finalist in the Wallace Art Awards and the recipient of Australia's HeadOn Portrait Prize. Her work has been exhibited in New Zealand, Australia, USA, France and Poland and centres on bodies of water as psychological, environmental and cultural landscapes.



Kath Batchelor ▼

Kath is a 3D mixed media artist who graduated from Hungry Creek Art and Craft School in 2006 with an Arts and Craft Diploma, after which she completed a Bachelor of Applied Arts at Northtec (2016). Kath works predominately with objects – found and created.



▶ Max Patté

Max studied at the Wimbledon School of Art in London and was elected an Associate of the Royal Society of British Sculptors in 2008. Based in Wellington for the past 10 years, Max has created a body of work that includes both sculpture and lightworks. Max's works are in the collections of Sir Michael Hill, Charles Saatchi, Stephen Fry, Sir Richard Taylor, and Sir Ian McKellen.



HOUSE 5

Mount Eden

Built in 1880, this character villa is one of the original homes on Mount Eden's western slopes, once standing on a 10-acre site. Now, still on a large 1,535m² site, it is considered a 'well-kept secret', down a hidden driveway opening to an elevated section with fabulous views out to the west and up to the mountain.

The large house has an underground wine cellar and original horse stables converted into garaging. Its extensive gardens have been recently landscaped, with an infinity edge swimming pool designed to maximise land area and views.

Sponsored by





◀ Peter Hackett

Peter says he not only uses oil paint to describe a meadow; he uses a meadow to describe the potential of oil paint. The thick nature of the paint confers qualities on these paintings that can only be felt in front of them. They give great emphasis to the movement of the hand, as it creates the image and the unifying overall texture of the painting.

Ramon Robertson ▶

Inspired by the urban landscape and its inhabitants, Ramon's work looks at architectural themes and uses the figure as a tool to portray his ideas about human behaviour, psychology and the synthetic world we inhabit. Mass-production, commonly used materials and the love and enjoyment of the city are also themes followed in his work.



THE NEW WAY TO BUY ART

- Interest free art loans • 10% deposit
- 9 equal monthly payments • No hidden costs

Get pre-approved today at **myart.co.nz**



MY ART

Instagram Facebook @myartnz



Mary Mcfarlane ▲

A graduate of the University of Canterbury (1986) and the prestigious RMIT in Melbourne, Mary has become best known for her work on vintage mirrors, carrying layers of meaning embedded in the history and forms of the mirrors themselves. Her mirrors allude to the aura of inner beauty and to the dark side of self.

Rachel Hirabayashi ▶

With a degree in Art History/Theory from the University of Otago, Rachel is a full-time artist painting in acrylics and sculpting in metal in Central Otago. Her work is influenced by her years in Japan and Mexico as well as our unique environment. The surfaces of her paintings are built up over time, of light glazes of colour alternating with opaque layers of paint.

Bec Robertson ▶

A mixed media artist, Bec has a distinctive and contemporary feel to her work; exploring ink, watercolour and gold foil on wood with a clear glass like resin finish. A New Zealander, Bec has lived in London, Singapore and the rainforest of Cairns, where for several years she had no electricity and was surrounded by Australian wildlife – the perfect creative space to observe and paint.



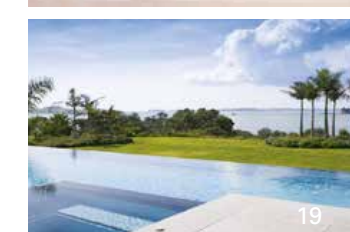
EXPERIENCE FRONTIER POOLS



FRONTIER POOLS
CONCRETE POOL SPECIALISTS



phone 09 295 0989
email info@frontierpools.co.nz
www.frontierpools.co.nz



HOUSE TOUR MAP



House 1
Parnell



House 2
Parnell



House 3
Mount Eden
We recommend you park at the Church and walk or shuttle



House 4
Mount Eden
Park at the Church



Art Shop and Café
St Barnabas Church,
283 Mount Eden Road
Off street parking



House 5
Mount Eden
Park at the Church



House 6
Epsom



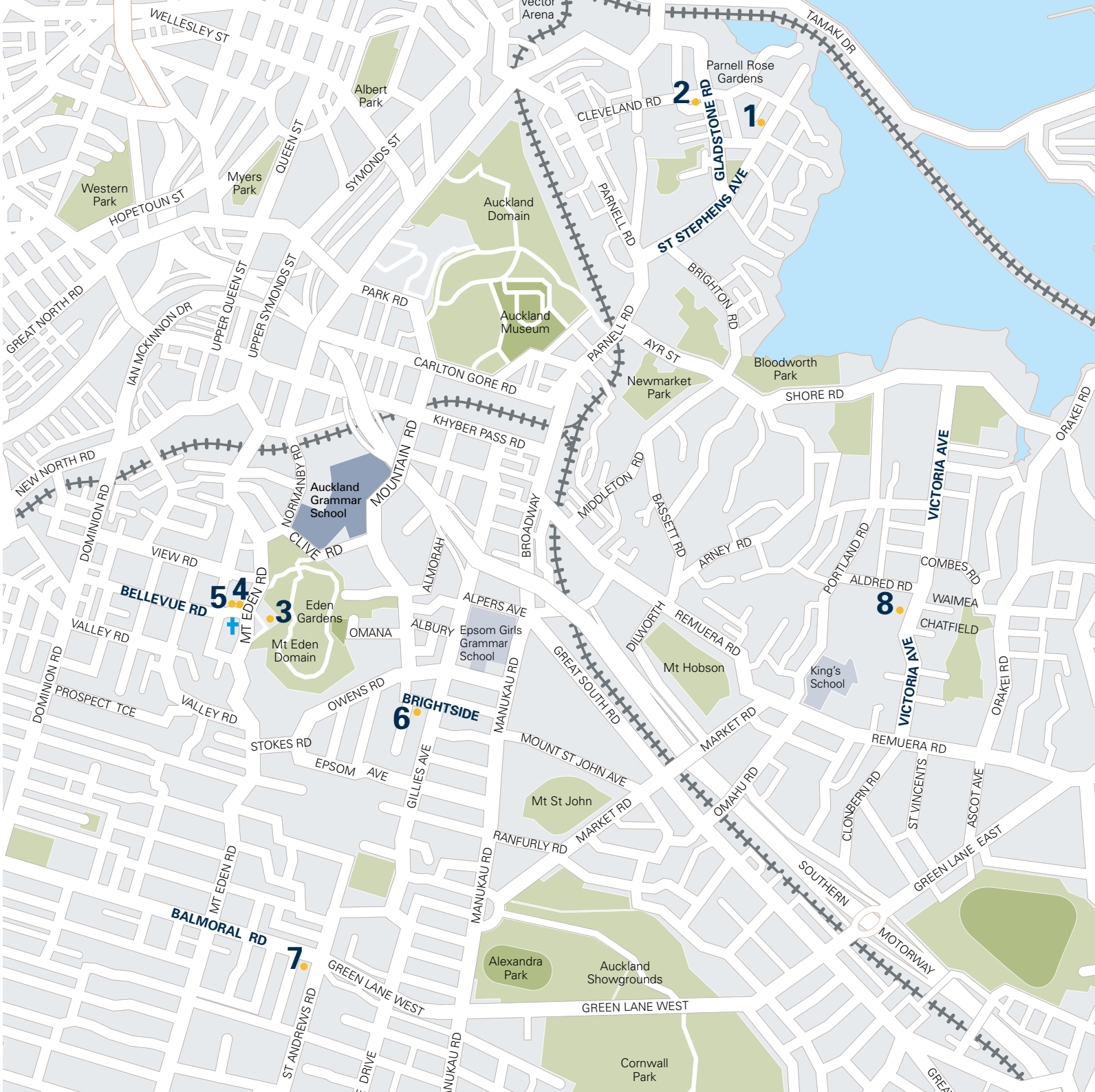
House 7
Epsom



House 8
Remuera

Škoda shuttle service

There will be a complimentary shuttle service, courtesy of Škoda, between the Art Shop and Café at St Barnabas Church (283 Mount Eden Road) to House 3, for those unable to walk up the hill. This will be on a continuous cycle between 10am and 3.30pm.





ART SHOP AND CAFÉ

**St Barnabas
Anglican Church,
283 Mount Eden Road
Open 10am-4pm**

On the day of the Art House Tour, make sure to stop for a break and visit the pop-up Art Shop and Café at St Barnabas Anglican Church on Mount Eden Road.

Open from 10am-4pm on Saturday 27 October, the shop will offer a range of carefully curated and affordable artworks and gifts, including paintings, prints, ceramics, wall hangings, glasswork and other art items that can be purchased on-site.

Alongside the Art Shop will be a café with great coffee and delicious food. Off street parking will be available in the Church car park.

Both the Art Shop and the Café are open to the public.

Ticket sales on the day

Art House Tour tickets can be purchased on the day at the Art Shop and Café.

Some of the carefully curated, smaller artworks on sale at the pop-up Art Shop.



Simon Lewis Ward



Susan Christie



Barbara Franklet



Erin Simpson



Pien Faulkner



Ronald Andreassand



Lisa Hoskin



Gus Leen

HOUSE 6

Epsom

This heritage-protected house sits on a 1,017m² site in Epsom, which was originally part of four hectares given to cutlery merchant George Burgoyne Owen as a wedding gift from his father-in-law. A successful businessman, Owen went on to become vice-president of The Northern Club and director of the Bank of New Zealand and New Zealand Insurance.

A protected puriri tree that the Owen family planted still stands on the front lawn.

The house and grounds were left to deteriorate over recent decades but were extensively renovated between 2013–2015. The current owners have recently landscaped the property.

Sponsored by



Catherine Roberts

Catherine lives on Wellington's south coast, where she has painted her semi-abstract landscapes for 17 years. Her inspiration comes from our environment, in particular, the forest and bush. The execution of each piece usually evolves from layers of texture, paint and lacquer, with no perfect lines or brushstrokes to be seen.

Anton Forde

Connection to the land, majesty of nature, and a fascination with themes universal to 'first nation' cultures; these are the greatest influences on Anton's work. Since completing his Masters of Maori Visual Arts at Toioho ki Apiti Massey University, Anton has spent extended periods of time living in both Taranaki and Ireland, discovering ancient inspirational art themes.



Ilya Volkhine

Born in Russia, Ilya lived in New York and Australia before settling in New Zealand in 2009. His work conveys a feeling of awkwardness through the mixture of both naive brush work, stylisation and strange situations. He has been widely recognised at many art award exhibitions.

Flox

An aerosol artist with a Fine Arts degree, Flox's trademark native birds, ferns and flowers magically transformed grey Auckland city walls into vibrant depictions of the natural world. Intricately hand-cut stencils set her apart from the rest, prompting a demand for these as artworks in their own right.





◀ Michael Lowe '02

A Grammar Old Boy, Michael is a cross-disciplinary artist also working in architecture and urban design. His artworks explore human perception of the landscape in terms of how we attribute value and build connections to the 'natural environment'.



◀ Richard Page

After an apprenticeship with Yael Artsi, Richard began a full-time career in sculpture in Italy. Recently he has been creating geometric shapes, which connect to things aquatic. Through his studies of seashells, he came across 'the golden section'. This sacred geometry has opened new dimensions to his sculptures.



Nicky Foreman ▲

A graduate from Elam School of Fine Arts (1992), Nicky has had over 35 solo exhibitions and shows regularly in New Zealand and France. Her work is represented in many collections, including that of Saatchi & Saatchi New York and former Prime Minister John Key.

Rosie Ralph ▶

After a recent sell-out exhibition at the New Zealand Art Show in Wellington, the Art House Tour is Rosie's Auckland debut. Her abstract works continue her popular 'phonetic' series. Rosie favours bright acrylics and believes art exists to invoke feelings, excite imagination and question intention.



Adam Shuter ▲

Adam's designs have won a number of prestigious awards and gold medals in both New Zealand and internationally. He combines fine detailing of organic materials with natural forms in contemporary designs that reflect a truly unique New Zealand style.



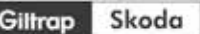
KODIAQ SPORTLINE UPGRADE FOR \$999



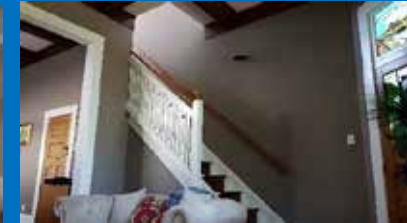
Kodiaq SportLine Upgrade For \$999*

When you purchase any Kodiaq Style, you can upgrade to a Kodiaq SportLine for only \$999 - New Zealand's Car of the Year 2017 with a sporty twist. We'll also include our 3 year/50,000km service plan included at no cost (valued at up to \$850). That's a combined saving of up to \$5,850. Terms and conditions apply*.

58 Great South Road, Newmarket. 09 522 9922 | giltrapskoda.co.nz | OPEN 7 DAYS



Do you need painting this Summer?



Winner of Nine National Industry Awards including:

- **Westpac Excellence in Customer Service Delivery**
- **Residential Masterpainter of the Year**

Call Paul to discuss your project today - 021 842 108

*Mention Auckland Grammar Art House Tour and Get a \$1,500 off a full repaint



pbhousepainters.co.nz

HOUSE 7

Epsom

Built in 1928, this Gummer and Ford house sits high on its 1,495m² section, with elegant rooms and large French windows typical of these leading architects of their day.

This home has been a labour of love over many years by the owners to gradually bring it into the 21st century, while remaining true to the style of the original.

Furnished in a traditional but eclectic style, with a mix of antique and mid-century furniture collected over the years, the owners have created a welcoming family home.



◀ Kirsty Nixon

A successful watercolour artist, Kirsty captures the vibrant personality of the New Zealand landscape on canvas in a fresh and distinctly modern way. The feisty tui and the cheeky fantail feature heavily in her latest pieces.



Justin Boroughs ▲

Born in Paignton, England, Justin graduated with a Bachelor of Fine Arts from Elam School of Fine Arts. He has had over 20 solo painting exhibitions and is a senior art master at Auckland Grammar School.



◀ Josh Lancaster

Having wanted to be an artist since he was a child, Josh moved to Hawkes Bay in 2016 with brush in hand to have a proper go at it. His landscapes often capture the geography of the heart – the places we call 'ours', that define who we are and where we come from.

Raymond Jennings ▶

A multi-disciplinary artist, Raymond graduated with a Bachelor of Fine Arts from Elam School of Fine Arts before embarking on a lively career, exhibiting throughout New Zealand, the US and Singapore. His work carries a positive dynamic energy, with expert colour combinations, light and dark contrast, a strong sense of form and movement, together with an expansive multi-dimensional spatial understanding.





Ron Esplin

Ron has exhibited both in New Zealand and overseas. His work is in the DCC Art Collection and Oamaru's Forrester Gallery. Ron believes the artist has a duty to point out the beauty of our surroundings and to invite the viewer to take a moment to appreciate it.



Will Lorimer '13

Will started taking photos at the age of 12, capturing everyday objects around him, interpreted through the lens of a camera. At Grammar, he partnered his photography study with design, developing a unique style that saw him recognised as the recipient of the 2016 Art House Tour Photography Award. Will is now studying a Bachelor of Design (with Honours), majoring in photography at Massey University in Wellington.



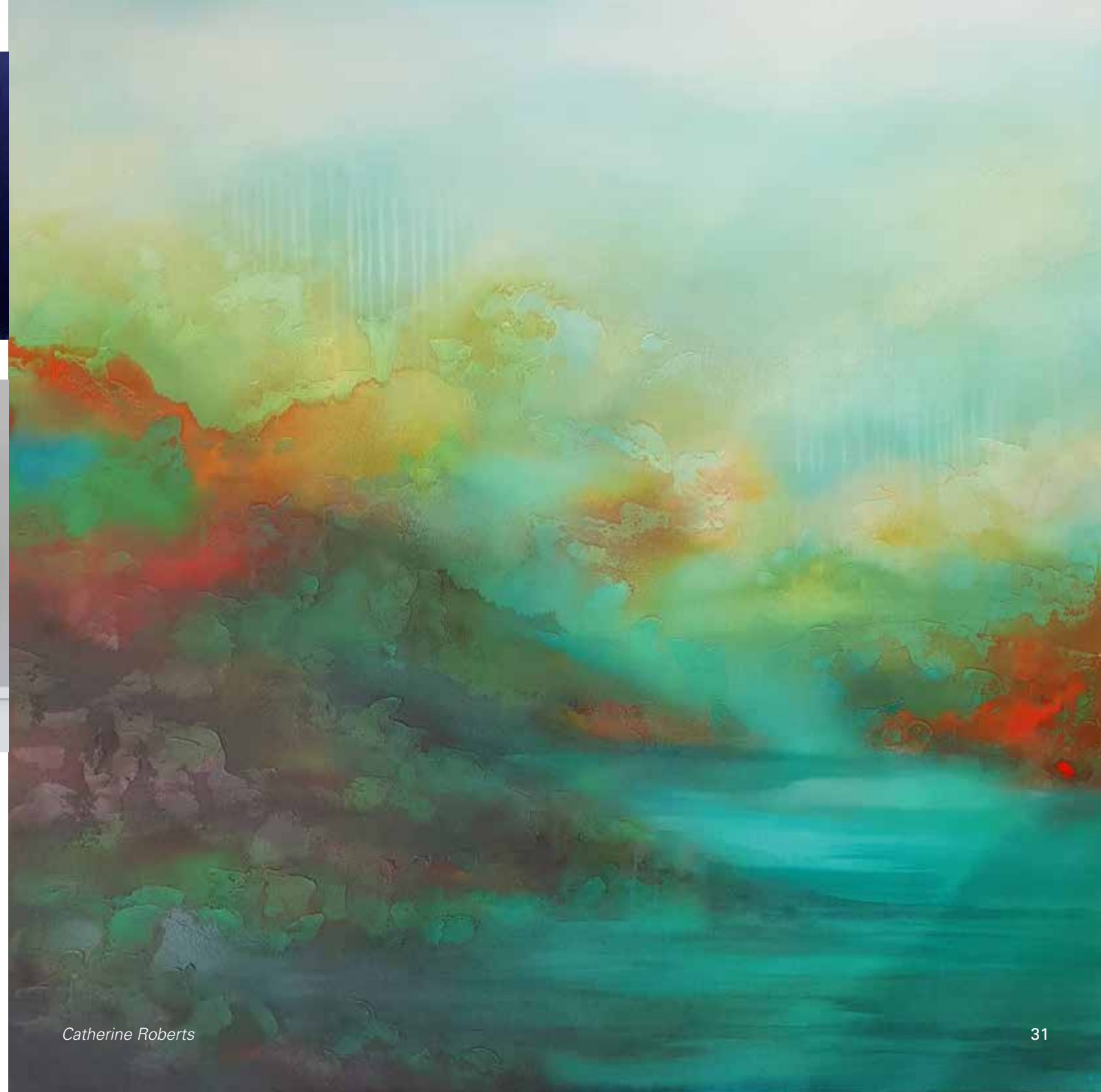
Emma Bass

A celebrated photographic artist, Emma's fine art photography of floral constructions has been shown at many leading art galleries. Emma was the only New Zealand artist invited to exhibit at the prestigious Summer Exhibition at the Royal Academy in London in 2016.



Terry Prince

Terry was taught by Garth Tapper and spent two years at Elam working with Ted Dutch and painting with and being mentored by Mike Yoffe and Jan Nigro. Terry's work is held in private collections and galleries in France, the UK, the USA, Canada, New Caledonia and New Zealand. His work captures the often moody, spiritual atmosphere he sees in the West Coast beaches.



Catherine Roberts

HOUSE 8

Remuera

This beautiful double brick cottage with its Welsh slate roof would be quite at home in the Cotswolds.

Recently renovated, the architects have preserved the character of the home, while making it fresh and liveable, adding a large marble-floored conservatory at the back of the house.

Bedrooms housed in the eaves upstairs, large fireplaces and a feature staircase with a generous landing and skylight give this home a truly unique feel, not often seen in this part of the world.



◀ Peter Rees ▶

A fine art painter, photographer, teacher and gallery owner, Peter now concentrates on producing and exhibiting his own work. He is drawn to the dramatic contrasts in light and atmosphere created in mountain and coastal environments.

▶ Jimmy James Kouratoras ◀

Descended from a long line of artisans, Jimmy James' Cretan and Maori heritage is fired by the surfing, skateboarding and graffiti culture. He won the People's Choice Award at the Brisbane Contemporary Art Prize (2016) and was shortlisted for the National Contemporary Art Award (2017).



◀ Theresa HR Lane ▶

The observer, Theresa recognises the humorous and absurd, using mixed media, found and created collage to question social norms. A Wallace Art Awards 2017 finalist, her work is included in the Wallace Arts Trust Collection and held in various private collections.



▼ Tanya Blong ▲

Australian-born and Taranaki-raised, Tanya graduated in 2006 from Hungry Creek Art and Craft School with a major in painting and sculpture. Extensive overseas travel has enriched and informed the direction of her work. She has had numerous solo and group shows and her work is held in international, public and private collections.



◀ Xianling Zhang ▶

Xianling holds a Bachelor of Fine Arts from Shandong Normal University and a Masters from Shandong Art College. Her works have been included in a number of exhibitions and are in both gallery and private collections.



INDEX OF ARTISTS

| | | | | | |
|--------------------|----|-----------------------------|----|-------------------|----|
| Emma Bass | 30 | Graeme Hitchcock | 13 | Kirsty Nixon | 29 |
| Kath Batchelor | 17 | Sara Hughes | 05 | Brad Novak '89 | 09 |
| Tanya Blong | 33 | Adrian Jackman | 13 | Ainsley O'Connell | 10 |
| Justin Boroughs | 29 | Raymond Jennings | 29 | Richard Page | 26 |
| Cathy Carter | 17 | Hannah Jensen | 15 | Neal Palmer | 13 |
| Iain Cheeseman | 06 | Felicity Jones & Mark Smith | 17 | Max Patté | 17 |
| Neil Donaldson | 10 | Jimmy James Kouratoras | 33 | Terry Prince | 30 |
| Ron Esplin | 30 | Gregor Kregar | 06 | Rosie Ralph | 26 |
| Jake Feast | 10 | Josh Lancaster | 29 | Peter Rees | 33 |
| Flox | 25 | Theresa HR Lane | 33 | Catherine Roberts | 25 |
| Anton Forde | 25 | Anna Leyland | 10 | Bec Robertson | 18 |
| Nicky Foreman | 26 | Will Lorimer '13 | 30 | Ramon Robertson | 18 |
| Max Gimblett '50 | 05 | Michael Lowe '02 | 26 | Adam Shuter | 26 |
| Belinda Griffiths | 13 | Karl Maughan | 05 | Michel Tuffery | 09 |
| Peter Hackett | 18 | Mary Mcfarlane | 18 | Raukura Turei | 10 |
| Guy Harkness | 09 | Judy Millar | 06 | Ilya Volkhine | 25 |
| Chris Heaphy | 05 | Peter Miller | 13 | Xianling Zhang | 33 |
| Rachel Hirabayashi | 18 | John Mulholland | 09 | | |

Adrian Jackman



STUDENT ARTISTS

Student art, both paintings and photography, will be available to buy at the Art House Tour Launch Evening on Friday 26 October. The works will be produced by Grammar painting, design and photography students in Forms 6 and 7.

ART AWARDS

The Faulkner Award is to recognise the visual arts at Auckland Grammar School and to encourage students to keep an open mind towards the Arts and embrace their talents. We hope the award will give both the winner and the runner-up the drive to take their art to the next level and keep art as an important part of their life.

The Canon Photography Award is to recognise outstanding photographic imagery. It will provide inspiration, equipment and training to further the artistic talent of the School's aspiring photographers and encourage them to grow their creativity, one photo at a time.

GALLERY PARTNERS

Gow Langsford Gallery

26 Lorne Street/Cnr Kitchener St and Wellesley St,
Auckland, New Zealand
+64 9 303 4290
info@gowlangsfordgallery.co.nz
www.gowlangsfordgallery.com

NKB Gallery

455 Mount Eden Road, Mount Eden,
Auckland, New Zealand
+64 9 623 1464
james@nkbgallery.co.nz
nkbgallery.co.nz

FRIDAY NIGHT ART BUYING

All student art will be available to purchase on the Friday evening at set prices. Any works that are unsold will then be available to buy the following day, on Saturday 27 October, from 10am–4pm at the Art Shop and Café at St Barnabas Church (283 Mount Eden Road).

A number of unique items will be available at auction on the Friday night (see opposite). These will include the Faulkner Award and Canon Award for the top students' artworks.

Our thanks to the 'Mix and Match' artists who have kindly donated 20cm x 20cm original artworks for sale on Friday night.

All art purchased on the evening of Friday 26 October must be taken home by the buyers on the night.

Karl Maughan

ITEMS AT AUCTION

Items for live auction during the Launch Evening on Friday 26 October are works by:

The Faulkner Award-winning student artist

The Canon Award-winning student photographer

Grammar Old Boy Finn Wilson '09

Grammar Old Boy Greer Twiss '52

The live auction will commence at 7.45pm.

A silent auction will feature a private tour of Rannoch House (home of the James Wallace Arts Trust) for six people and a chauffeured Škoda for the Art House Tour.

Entry is free to all Art House Tour ticket holders. Tickets for the Launch Evening only are available as door sales for \$25 each.

Note: Grammar Old Boys are referred to and recorded by their Form 3 year (Finn Wilson started Grammar in 2009 and Greer Twiss started in 1952).

TOUR GUIDELINES

Please do:

1. Wear your registration wristband and carry ID with you at all times.
2. Remove your shoes before entering each home. We suggest you carry them with you in the Barfoot & Thompson bags provided.
3. Park on the road in a legal and safe carpark.
4. Note that the last entry time into all homes will be 3.45pm.
5. Enjoy the complimentary shuttle service, courtesy of Škoda, running continuously between 10am and 3.30pm from the Art Shop and Café at St Barnabas Church (283 Mount Eden Road) up to House #3.
6. Shop at our fabulous Art Shop in St Barnabas Church and enjoy the Art Shop Café.
7. Have fun on the tour!

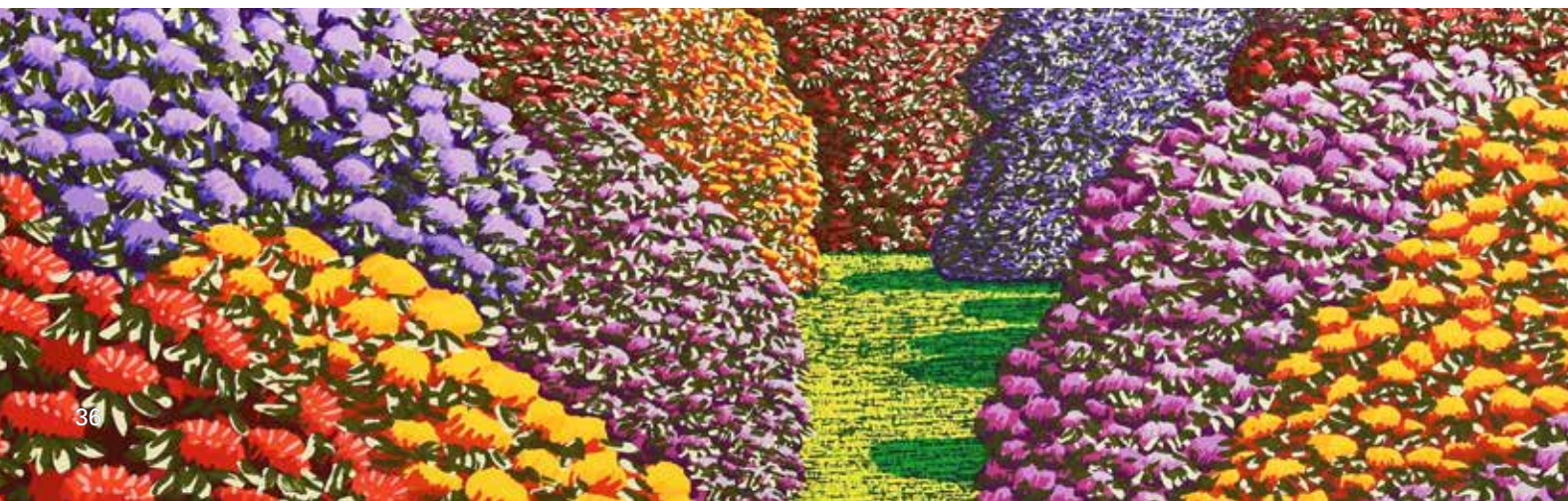
Please do not:

1. Park on private properties.
2. Eat or drink in the houses on the tour.
3. Take photos inside the houses.
4. Enter any closed off rooms or private areas.
5. Use the bathrooms in the homes on tour. Toilets are available at St Barnabas Church (283 Mount Eden Road).

TERMS AND CONDITIONS

For the sale of art at the Art House Tour on Saturday 27 October:

1. Art can be viewed online (arthousetour.co.nz) and at each Art House Tour home during the opening hours of 10am–4pm on Saturday 27 October.
2. Art can be purchased at each Art House Tour home with credit card or EFTPOS (EFTPOS facilities will be available at each home).
3. If you purchase a piece of art, please collect your artwork on Saturday 27 October, between 4pm–5pm. Please make sure you present your receipt for the artwork when you collect it.
4. If you cannot collect your artwork between 4pm–5pm, please phone Kristie Homersham on 021 063 9500.
5. If any sold artwork is not collected and we have not heard from you at the number listed above, the piece will be held until Monday 5 November. After this, it will be donated back to Auckland Grammar School.
6. All sales are final upon payment.



THANK YOU

Thank you so much for taking part in this year's Auckland Grammar School Art House Tour.

After the success of the inaugural tour in 2016, we were delighted to bring back this fabulous showcase of beautiful homes and art to raise funds for the School's Academic Endowment Fund.

This event has been brought to life by a dedicated and talented team of fellow Grammar parents who have worked enthusiastically and tirelessly to make it happen. Heartfelt thanks to all the committee members, and the very capable Kristie Homersham and Amanda Harkness from the Development Office.

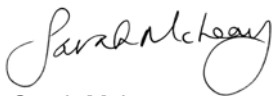
Many thanks also to the volunteer teams in the homes, made up of parents, staff and friends who have also contributed their valuable time and energy.

This event would not have happened without our generous sponsors, and particularly our chief sponsor, Barfoot & Thompson, who have given their commitment and support for the second year running.

We are incredibly indebted to the homeowners, who have graciously invited us into their beautiful homes to showcase the art.

Last, but not least, we thank all of the participating galleries, artists and student artists who have enabled us to bring you such a wonderful array of art and talent.

We hope you will enjoy this fabulous event and we thank you for being a part of it.



Sarah McLeay
Art House Tour Committee Chair

Here's to our wonderful supporters

Airopac
Auckland Grammar School Art, Finance, Music and Property Departments
Barfoot & Thompson
Ben Plumbly from Art & Object
Benefitz
Cabjak Kitchens
Canon
Daz Jensen
DB Breweries
Finn Wilson '09
Foley Family Wines
Frontier Pools
Global Security
Gow Langsford Gallery
Greenscene
KC Loo
Marion Tolich from Barfoot & Thompson
My Art
Newmarket Business Association
NKB Gallery
Our generous homeowners
Our Mix and Match artists
Our volunteer bakers for the Café
PBF
Pien Faulkner
Rannoch House
Russell Group
Škoda
Southern Cross Education Centre
The Hobson
Verve

Brad Novak '89





Painting



the town



green.



Barfoot & Thompson
Licensed REAA 2008 MREINZ

barfoot.co.nz